

Single Stream Recycling

*Recycling Made Easy!
Everything in One Bin*

No Sorting Necessary



“Increasing the amount you recycle can make a dramatic impact on the environment.”

Single Stream Recycling

is the latest in state-of-the-art technology which sorts recyclables at our facility. Putting everything in one bin, increases the ease and convenience of recycling so that more people participate and more resources are saved.

Why Recycle?

Recycling is an important way for individuals and businesses to reduce the waste they generate and reduce the negative impact of that waste. Recycling conserves our natural resources, saves landfill space, conserves energy, and air pollution. It generally takes less energy to make products with recycled materials than virgin materials, often significantly less. For example, it takes 20 times more energy to make aluminum from bauxite ore than using recycled aluminum. This means fewer fossil fuels are burned and less carbon dioxide is emitted to the atmosphere

You Can Make a Difference

Increasing the amount you and your family recycles can make a dramatic impact on the environment. If every American recycled just one-tenth of their newspapers, we would save about 25 million trees a year. By recycling you are choosing to make a difference, and benefiting future generations to come.

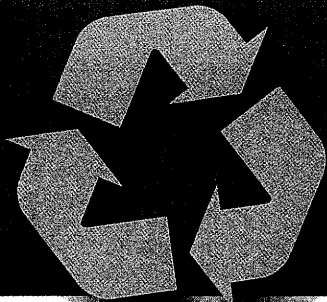
To Learn More

Call 800-330-7107

Visit ModernRecycles.com for more information

MODERN
Recycling

Printed on Recycled Paper



Single Stream Recycling

Materials Guidelines

Save & Post

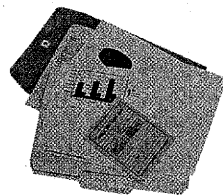
Recycling Made Easy!
Everything in One Bin

No Sorting Necessary

Paper



Paperboard
No wax coated paperboard



Office Paper
All types and sizes



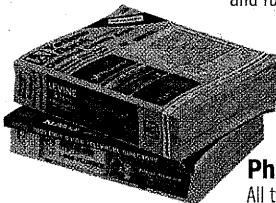
Junk Mail
Envelopes, Flyers, Brochures, Postcards, etc.



Newspaper
Remove bags, strings and rubber bands



Magazines & Catalogs
All types and sizes



Phone Books
All types and sizes

Cardboard & Paper Bags
Flatten cardboard & cut into pieces



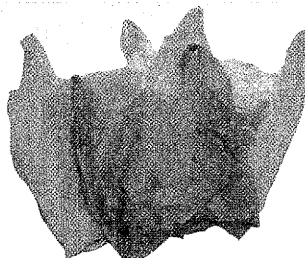
Single Stream Recycling

is the latest in state-of-the-art technology which sorts recyclables at our facility. Putting everything in one bin, increases the ease and convenience of recycling so that more people participate and more resources are saved.

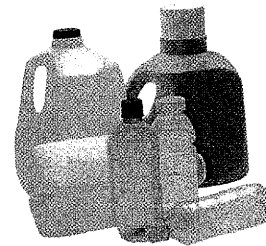
Plastic



Household Plastic*
Empty containers only



Plastic Bags*
Most retail & grocery bags



Plastic Jugs/Bottles*

Please Follow These Guidelines Carefully

*Please rinse/clean containers before putting into recycling bin.

Metal



Aluminum Cans*
Empty cans only



Kitchen Cookware
Metal pots, pans, tins & utensils



Steel & Tin Cans*
Empty cans only

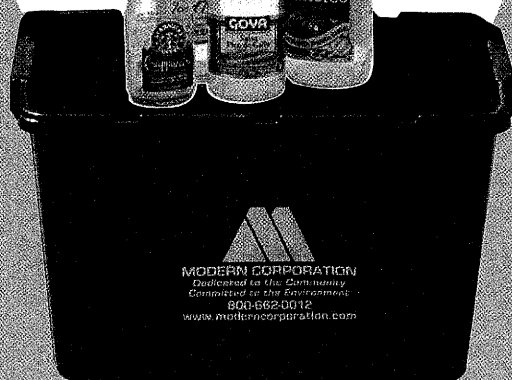
Unacceptable Items

- Paper milk or juice cartons
- Styrofoam containers/packing
- Garbage
- Propane tanks
- Paint cans
- Medical waste/syringes
- Flammable liquids
- Household cleaners
- Chemicals (dry or liquid)
- Wood items
- Concrete
- Garden hose
- Electrical cords

Glass



Glass*
Clear & colored



MODERN CORPORATION
Dedicated to the Community
Committed to the Environment
800-666-0012
www.modernrecycling.com

Recycle Bin Full?

Clear plastic bags can be used for additional items

Questions?

Call 800-330-7107
Visit ModernRecycles.com
for more information



Printed on Recycled Paper